

Kootenai County, Idaho



Map Tile Location within Township

6	5	4	3	2	1
7	8	9	10	11	12
18	17	16	15	14	13
19	20	21	22	23	24
30	29	28	27	26	25
31	32	33	34	35	36



THIS DRAWING IS TO BE USED FOR REFERENCE PURPOSES ONLY. THE COUNTY IS NOT RESPONSIBLE FOR ANY INACCURACIES CONTAINED HEREIN.

Map Revisions

06/21/10 - JB
Ptn 53N03W-35-2000 out to R/W & R/W as Cat 19 (11)

10/11/17 - ET
Ptn 53N03W-35-0700 out to R/W & R/W as Cat 19 (18)

01/02/18 - ET
Ptn 53N03W-35-0700 out to R/W & R/W as Cat 19 as corrections (18)

Notes:

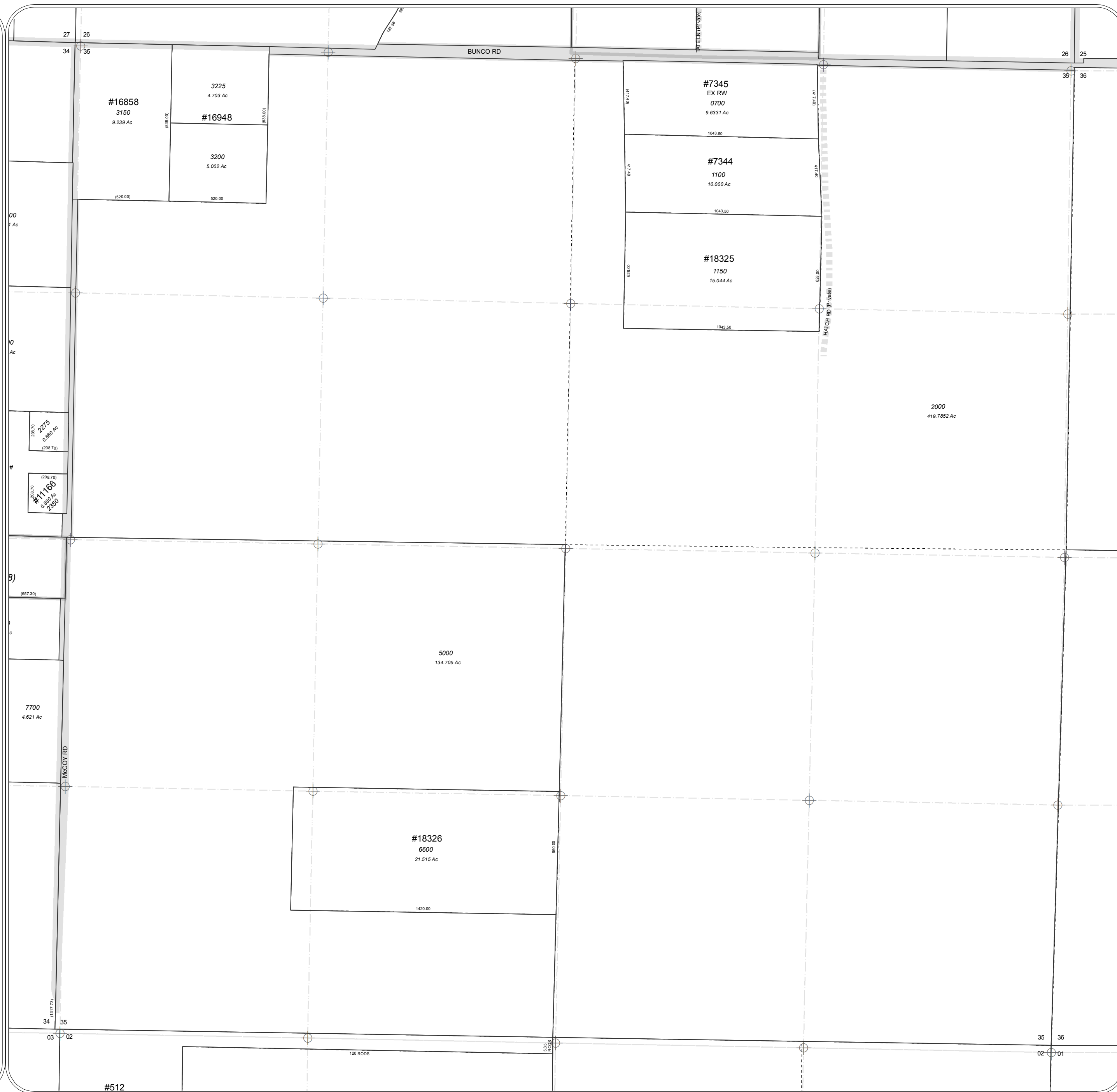
Parcel areas have been calculated by traverse closure when sufficient information has been available. Area shown is Net Assessable Area, Right-of-Way, where applicable, has been subtracted. Distances and curve lengths less than 50' may not be shown due to scale limitations. Dimensions in parenthesis denote record and/or platted lot dimensions.

LOCATION OF ROADS SHOWN ARE BASED ON ADDRESSABLE ROAD INFORMATION AND MAY OR MAY NOT BE PUBLIC.

Parcel Identification Number (PIN) are comprised as follows:
Platted: Sub-code and Parcel ID# ex. C-3510 and 021-999-C Resulting PIN = C-3510-021-999-C or C3510021999C
Unplatted: TwpRngSec and Parcel ID# ex. 50N03W-16 and 7950 Resulting PIN = 50N03W-16-7950 or 50N03W167950

Legend

- (C-5357) Sub-code
- 001-001-A Parcel ID# (PIN)
- TaxParcels
- LegalAreas
- Road RW
- Private Roads
- Plat Boundaries
- Railroad
- City Limits
- GCDB_Corners
- GCDB_Lines



Sec. 35 Twp 53 N. R. 3 W. B. M.