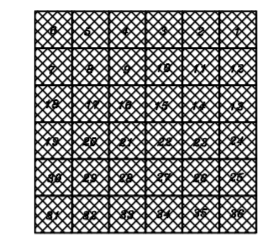


SEGREGATION REVISIONS

The revision dates below represent the file save dates for the posting of the listed revisions. The archive dates for these revisions are posted within the ARCHIVE REVISIONS box in the drawing title block.

- 10/26/99 - JCJ
53N03W-25-2600 out of 3200 (Y2K)
- 01/26/07 - SLM
Ptn of 53N03W-25-4900 combined w/ 5000 (07)

THIS DRAWING IS TO BE USED FOR REFERENCE PURPOSES ONLY, AND THE COUNTY IS NOT RESPONSIBLE FOR ANY INACCURACIES HEREIN CONTAINED.



KOOTENAI COUNTY
IDAHO

ARCHIVE REVISIONS

INITIALS	ACTIVITY	DATE
JCJ	CONVERSION	08-01-01
bc	GIS CONVERSION	08-22-03
bc	BROKE OUT SEC 31	01-25-07
bc	BROKE OUT SEC 26	03-02-09
GJC	BROKE OUT SEC 25	11-07-12

IMAGE FILE: \NOT USED
DRAWING FILE: \533W.DWG 00-00-00

NOTES:

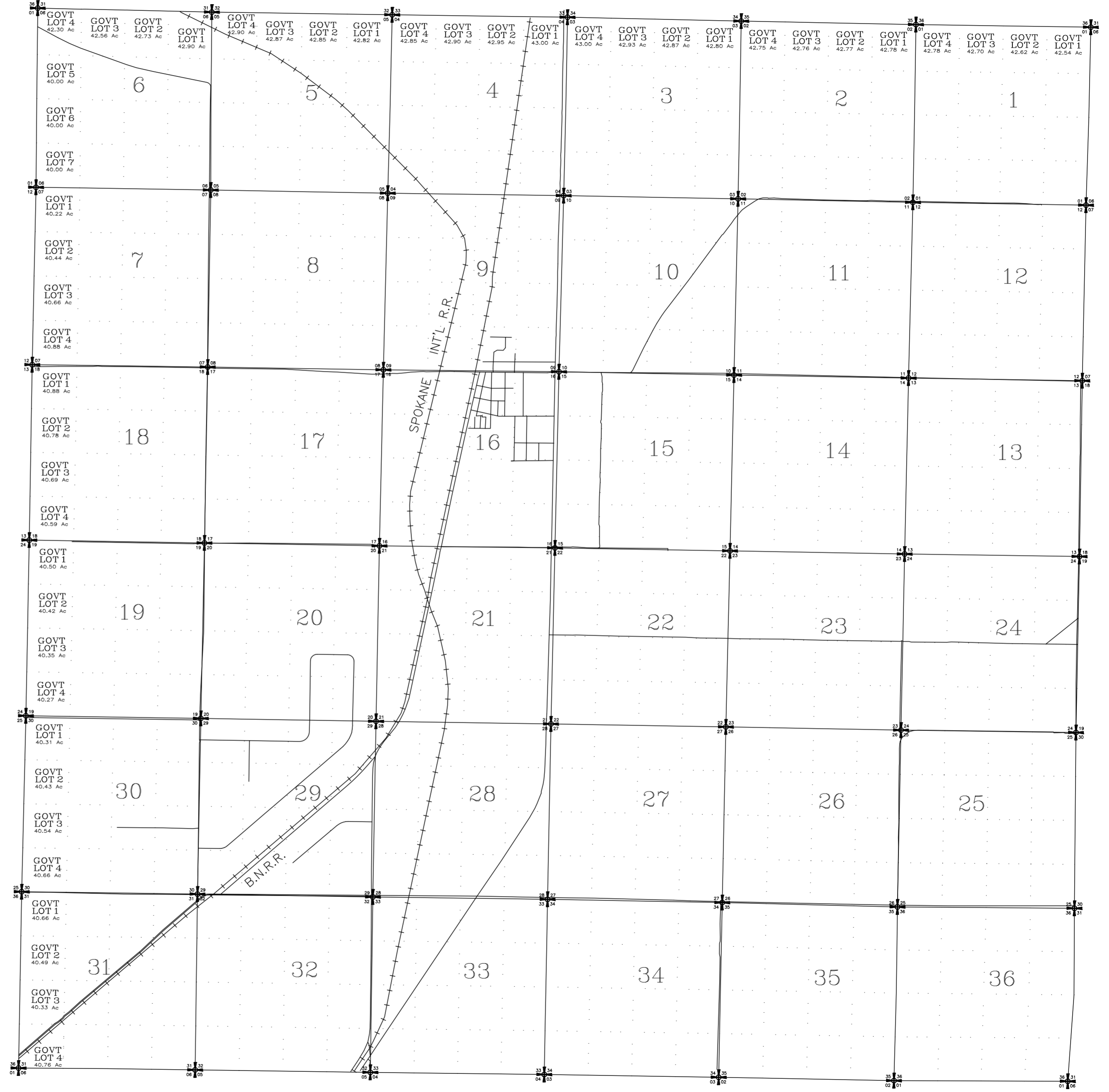
All lots or parcels with given bearings and distances were calculated by traverse closure. All other parcels were calculated by the most accurate means possible with the given information (i.e. length multiplied by width, triangulation, planimeter, scaling from existing map, and coordinate geometry). Acresages shown are net assessable; right-of-way, where applicable, has been removed. Distances and arc lengths less than 50' may not be shown due to space limitations. Dimensions in parenthesis denote record and/or plotted lot line dimensions.

Records of Survey used:

BK/PG	DESCRIPTION

Twp. 53 N. R. 3 W.B.M.

53N03W



SCALE: 1 INCH = 2400 FEET