

**SEGREGATION REVISIONS**

The revision dates below represent the file save dates for the posting of the listed revisions. The archive dates for these revisions are posted within the ARCHIVE REVISIONS box in the drawing title block.

- 12/11/97 - bc  
Ptn of Aban'd R/W redescribed as Tax #17626
- 12/31/97 - bc  
Ptn of Aban'd R/W redescribed as Tax #17648
- 08/27/98 - JCJ  
50N03W-29-7300 out of 7250 as ptn Tax #17626 (99)
- 08/07/02 - SLW  
Ptn of 50N03W-29-7900 in NE platted into SYRINGA HEIGHTS 4TH ADD and non-contiguous ptn now 0300 (03)
- 05/10/05 - TH  
50N03W-29-7900 platted into ptn SYRINGA HEIGHTS FIFTH ADDITION (06)
- 12/27/07 - ET  
0-8062-001-001-B, 001-C, and 001-D out of 001-0 (now -A), all in NE4 (08)
- 02/07/11 - GJC  
0-8062-001-001-A platted into SYRINGA HEIGHTS 7TH ADDITION (11)



6	5	4	3	2	1
7	8	9	10	11	12
18	17	16	15	14	13
19	20	21	22	23	24
30	29	28	27	26	25
31	32	33	34	35	36

KOOTENAI COUNTY  
IDAHO

**ARCHIVE REVISIONS**

INITIALS	ACTIVITY	DATE
bc	INITIAL CONVERSION	12-09-97
TH	SYRINGA HEIGHTS 5TH ADD	05-10-05
TR	GIS CONVERSION	09-04-07
GJC	SYRINGA HEIGHTS 7TH ADDITION	02-07-11

IMAGE FILE: \NOT USED  
DRAWING FILE: \503W29G4.DWG 00-00-00

**NOTES:**

All lots or parcels with given bearings and distances were calculated by traverse closure. All other parcels were calculated by the most accurate means possible with the given information (i.e. length multiplied by width, triangulation, planimeter, scaling from existing map, and coordinate geometry). Acresages shown are not assessable; right-of-way, where applicable, has been removed. Distances and arc lengths less than 50' may not be shown due to space limitations. Dimensions in parenthesis denote record and/or platted lot line dimensions.

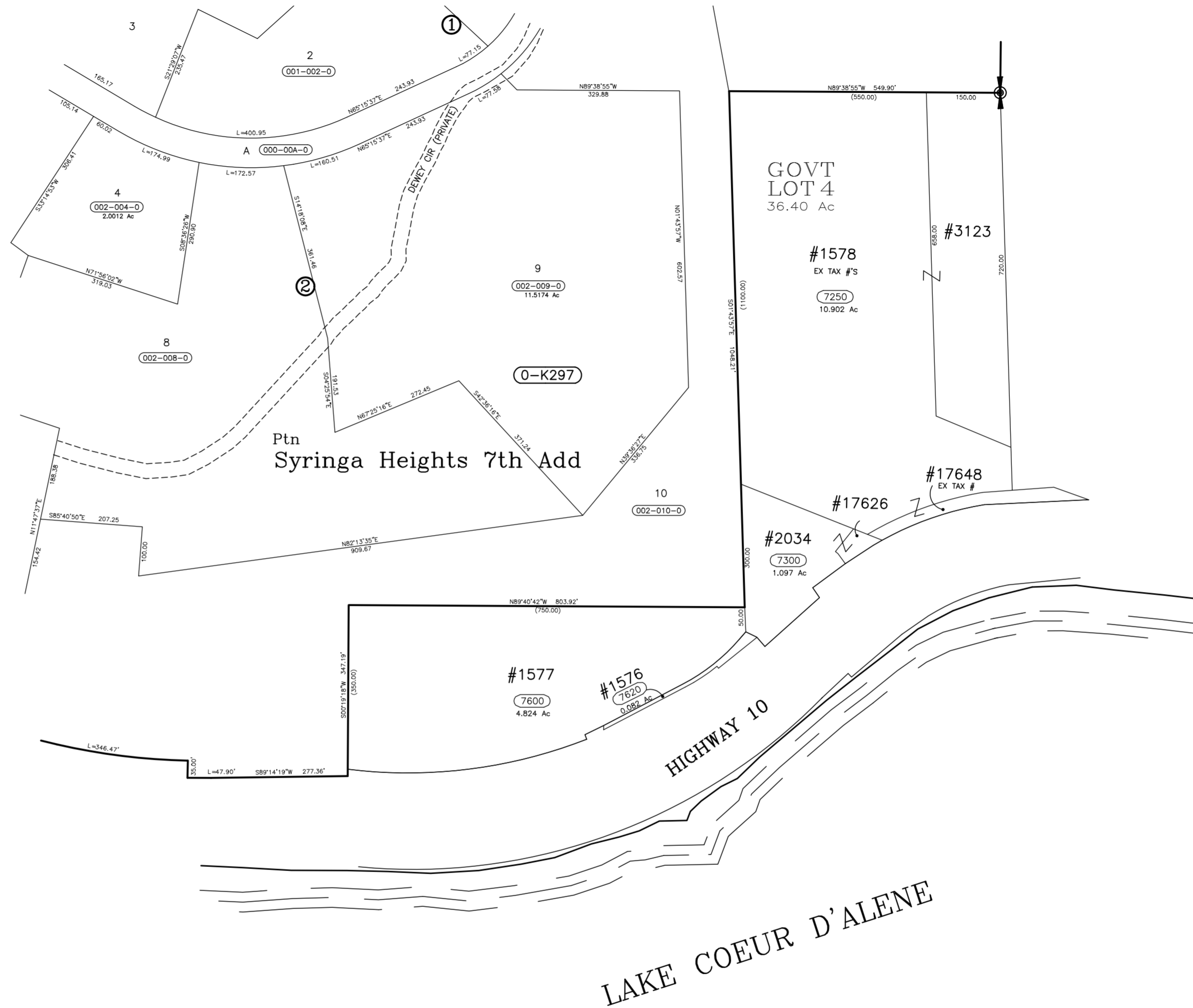
LOCATION OF ROADS SHOWN ARE BASED ON ADDRESSABLE ROAD INFORMATION AND MAY OR MAY NOT BE PUBLIC.

Records of Survey used:

BK/PG	DESCRIPTION

*Govt Lot 4 Sec.29 Twp. 50 N. R. 3 W.B.M.*

50N03W-29



Note:  
Shoreline depiction for illustrative purposes only, property lines assumed to extend to ordinary mean high water mark for assessment purposes unless otherwise noted.

SCALE: 1 INCH = 200 FEET